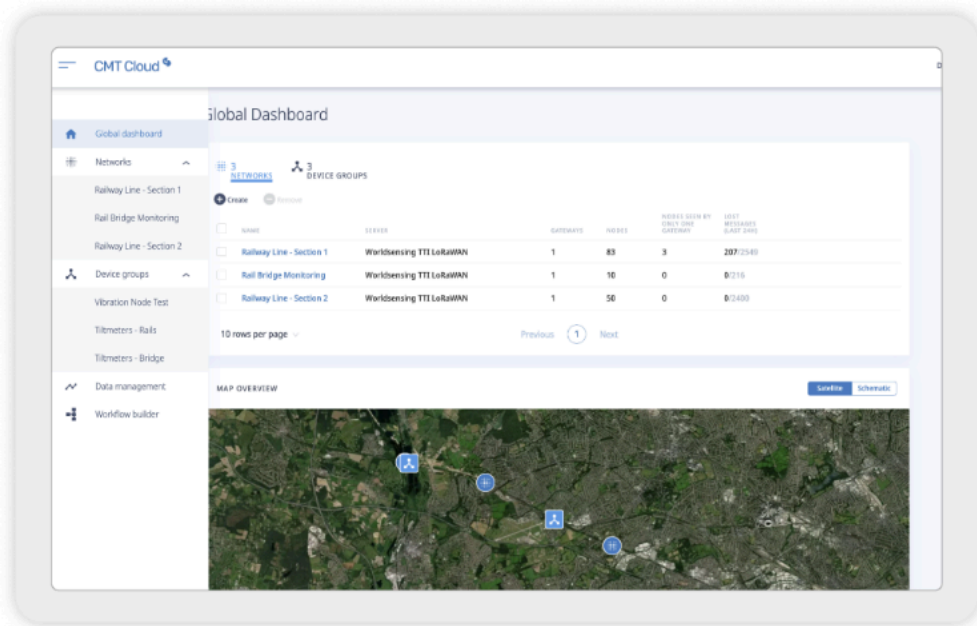


Worldsensing releases CMT Cloud 2.0, moving monitoring connectivity to the next stage

Barcelona, Spain, 1st February 2024



Worldsensing is pleased to present a new version of CMT Cloud, its newest Connectivity Management software Tool, featuring a new system architecture that allows users to manage multiple projects from a single account. With more than 5000 devices connected, Worldsensing is taking the CMT Cloud platform a step further to address growing connectivity management needs.

Since 2020, [CMT Cloud](#) has helped engineering companies manage monitoring systems remotely through a cloud platform, allowing, among others:

- The management of entire LoRa networks, configuring gateways, and all of the Worldsensing edge device portfolio
- The monitoring of performance of the overall network infrastructure
- The integration with third-party data visualization tools, using standard communication protocols.

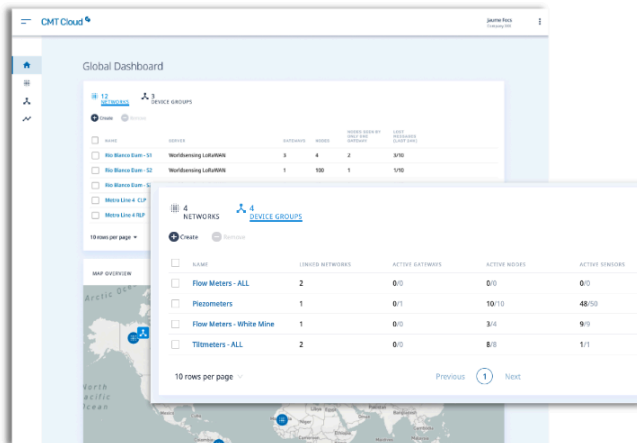
A more robust, functional and scalable version

CMT Cloud evolves into a new version allowing companies to manage all networks and assets of their Worldsensing monitoring systems, from a single platform, regardless where they are deployed.

Additionally, its new modules make the management of monitoring assets at different levels easier. The user experience has also significantly been improved. Last but not least, this new version has been designed with security embedded, ensuring compliance with data security, privacy, and control of business needs.

01
Reworked Architecture
So you can have all your projects under a single account

02
New Modules
You can now manage devices and networks at different levels for easier configuration and monitoring of your different assets.



The screenshot shows the CMT Cloud Global Dashboard. It features a table with columns for NAME, NETWORK, GATEWAYS, NODES, DEVICES, and LAST UPDATE. The table lists several networks like 'Worldsensing Lufthansa' and 'Worldsensing Lufthansa'. Below the table, there's a section for '4 NETWORKS' and '4 DEVICE GROUPS'. A modal window is open, showing a table with columns for NAME, LINKED NETWORKS, ACTIVE GATEWAYS, ACTIVE NODES, and ACTIVE DEVICES. The table lists 'Flow Meters - ALL', 'Piezometers', 'Flow Meters - White Mine', and 'Tiltmeters - ALL'. The modal also includes a 'Previous' button, a page indicator '1', and a 'Next' button.

03
Improved Data Management
So it is easier to send data from sensors to third party applications

04
Security by Design
Data security, privacy, and control that scales with you.

CMT Cloud, the connectivity management software for all Worldsensing monitoring systems

CMT Cloud is the right software for teams looking for:

- Compliance with business continuity standards, with system redundancy and data replicated automatically in independent data servers
- 24/7 data access for their monitoring systems
- Management of monitoring systems over geographically distributed locations

- Multidisciplinary teams working over several monitoring systems
- Remote management of sensor and device configuration

More information about Worldsensing's CMT Cloud [here](#) or by [getting in touch with us](#).

About Worldsensing

Worldsensing is a global IoT pioneer. Founded in 2008, the infrastructure monitoring expert serves customers in more than 70 countries, with a network of global partners to jointly drive safety in mining, construction, rail and structural health.

Worldsensing is headquartered in Barcelona and has a local presence in the UK, North and South America, Singapore, Australia and Poland. Investors include Cisco Systems, McRock Capital, ETF, Kibo Ventures, JME Ventures and Bentley Systems.

Press contact:

press@worldsensing.com